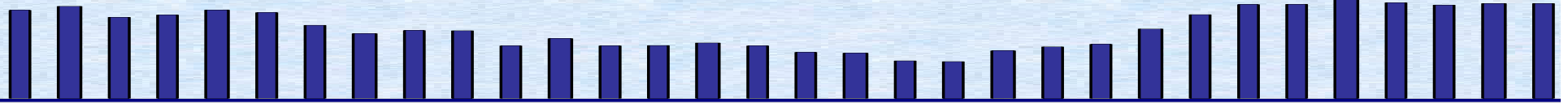


FCD CWI



# **The Foundation for Child Development**

## **Child and Youth Well-Being Index (CWI)**

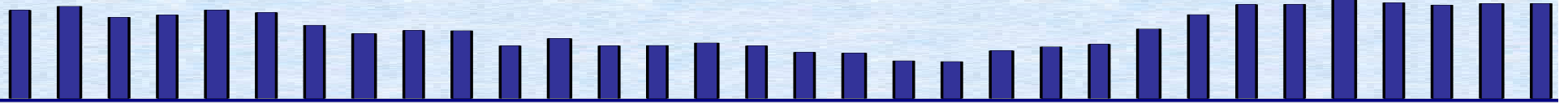
1975 to 2005 with Projections for 2006

A Social Indicators Project Supported by the  
Foundation for Child Development

New American Foundation Presentation, April 4, 2007

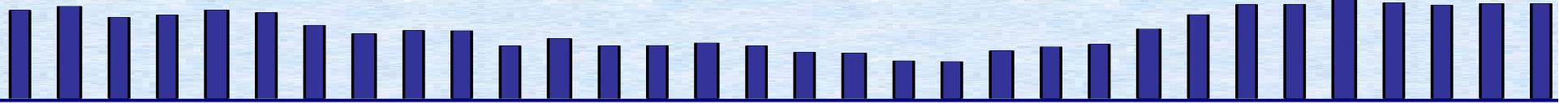
Kenneth C. Land, Ph.D., Project Coordinator

Duke University



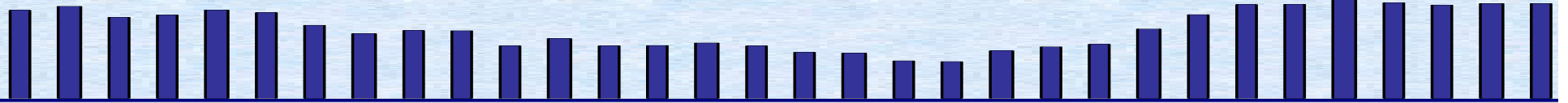
## What is the CWI?

- It is a composite measure of trends in the quality of life, or well-being, of America's children and young people since 1975.
- It consists of 28 social indicators organized in seven quality-of-life domains.



## What Does the CWI Tell Us?

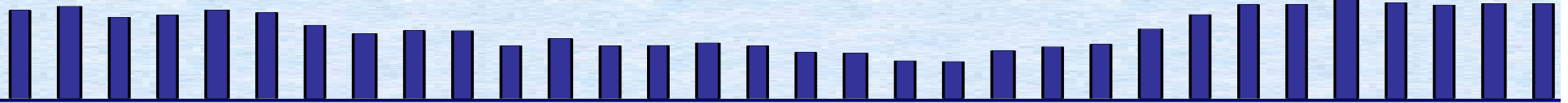
- Did overall child and youth well-being in the United States improve or deteriorate over the last two generations?
- By how much?
- In which domains or areas of social life?
- For which age groups?
- For boys and girls equally?
- For which racial and ethnic groups?
- Did disparities between groups increase or decrease?



## Methods of CWI Construction

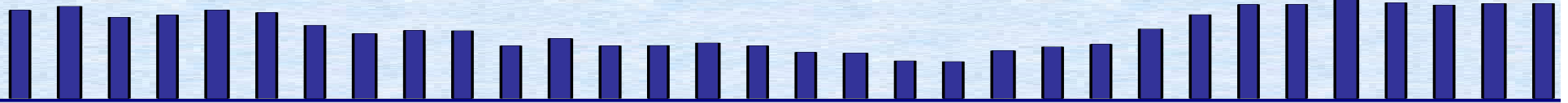
- The CWI places 28 national level indicators into seven quality-of-life domains
  - Family Economic Well-Being
  - Health
  - Safety/Behavioral Concerns
  - Educational Attainment
  - Community Connectedness
  - Social Relationships (with Family and Peers)
  - Emotional/Spiritual Well-Being

## FCD CWI



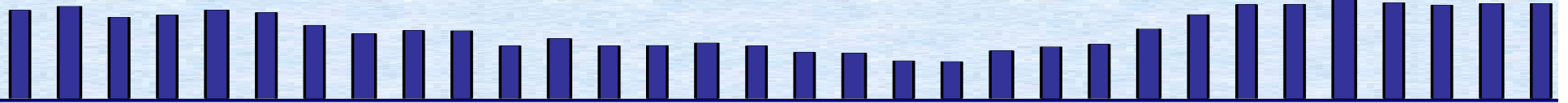
- Each of the 28 indicators uses annual time series data from vital statistics and sample surveys
- Each indicator is indexed by percentage change from the base year, 1975.
- The base year is assigned a value of 100.
  - A value greater than 100 in subsequent years means the social condition measured has improved. A value less than 100 means the social condition has deteriorated.

## FCD CWI



- The 28 indicators are grouped together into seven domains to construct domain-specific summary well-being indices.
  - Within these summary indices, each indicator is equally weighted.
- The seven domain indices are combined into the Child and Youth Well-being Index (CWI).
  - Each domain is equally weighted in the construction of the CWI.

**FCD CWI**



# **Composite Index of Child and Youth Well-Being**

# FCD CWI

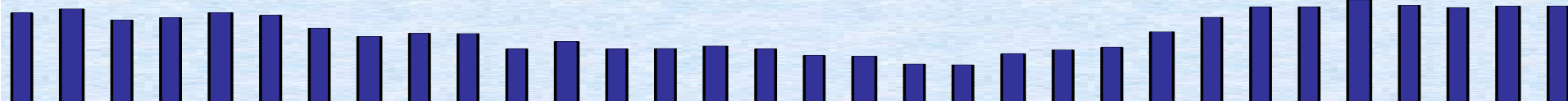
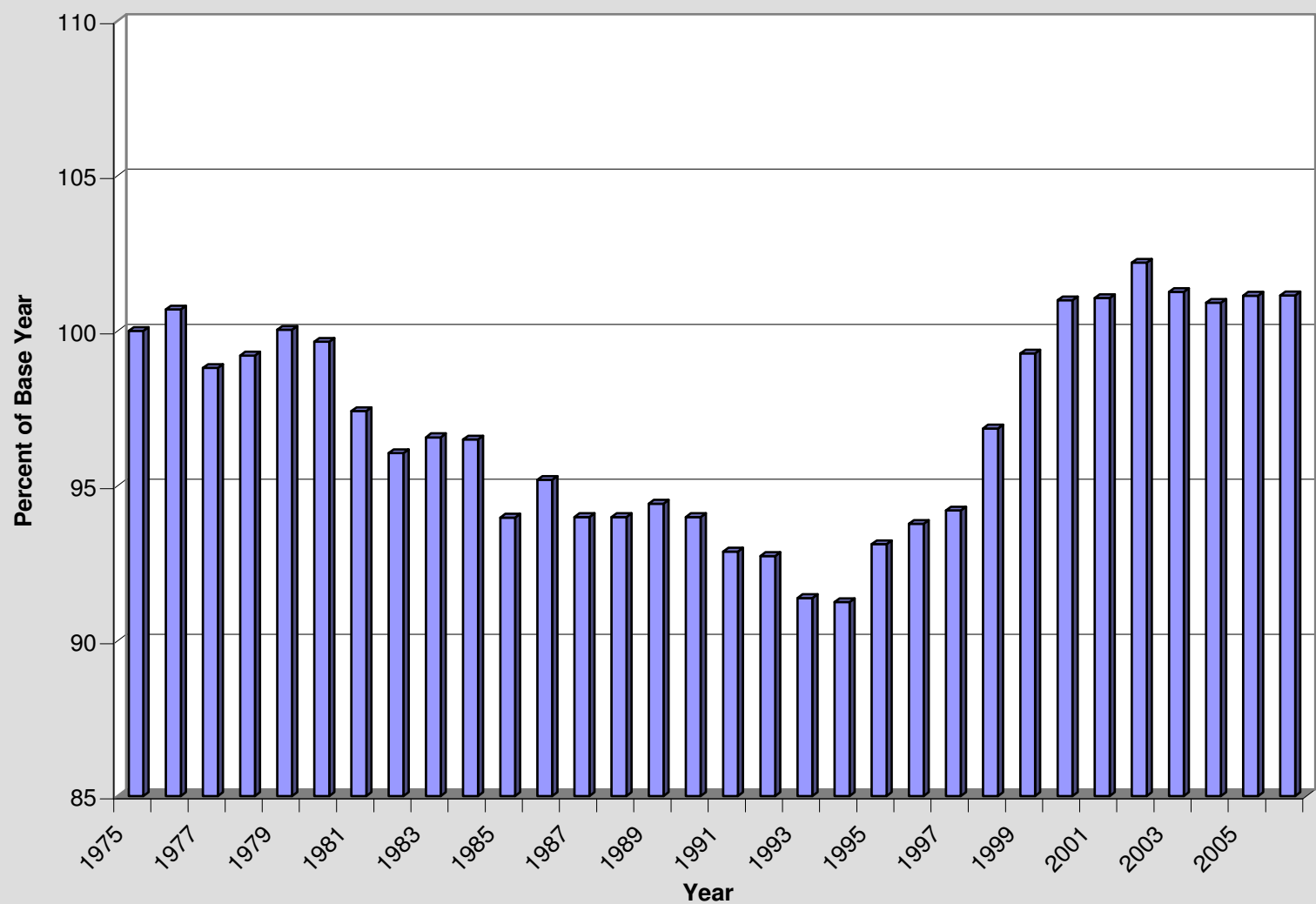
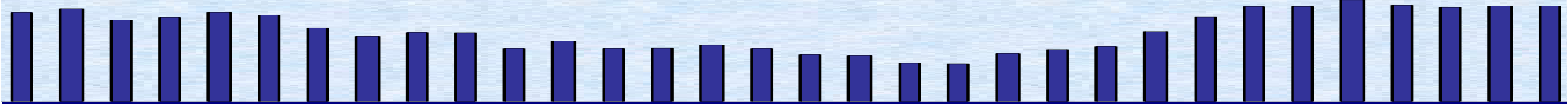


Figure 1: Child Well-Being Index, 1975-2005, with Projections for 2006



FCD CWI



# Domain-Specific Indices

# FCD CWI

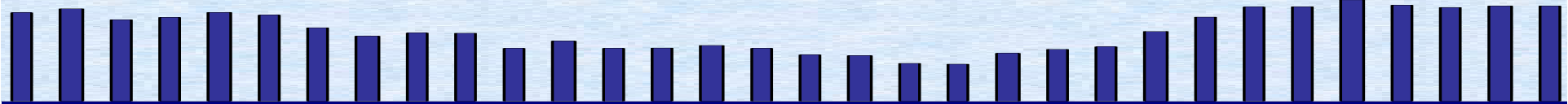
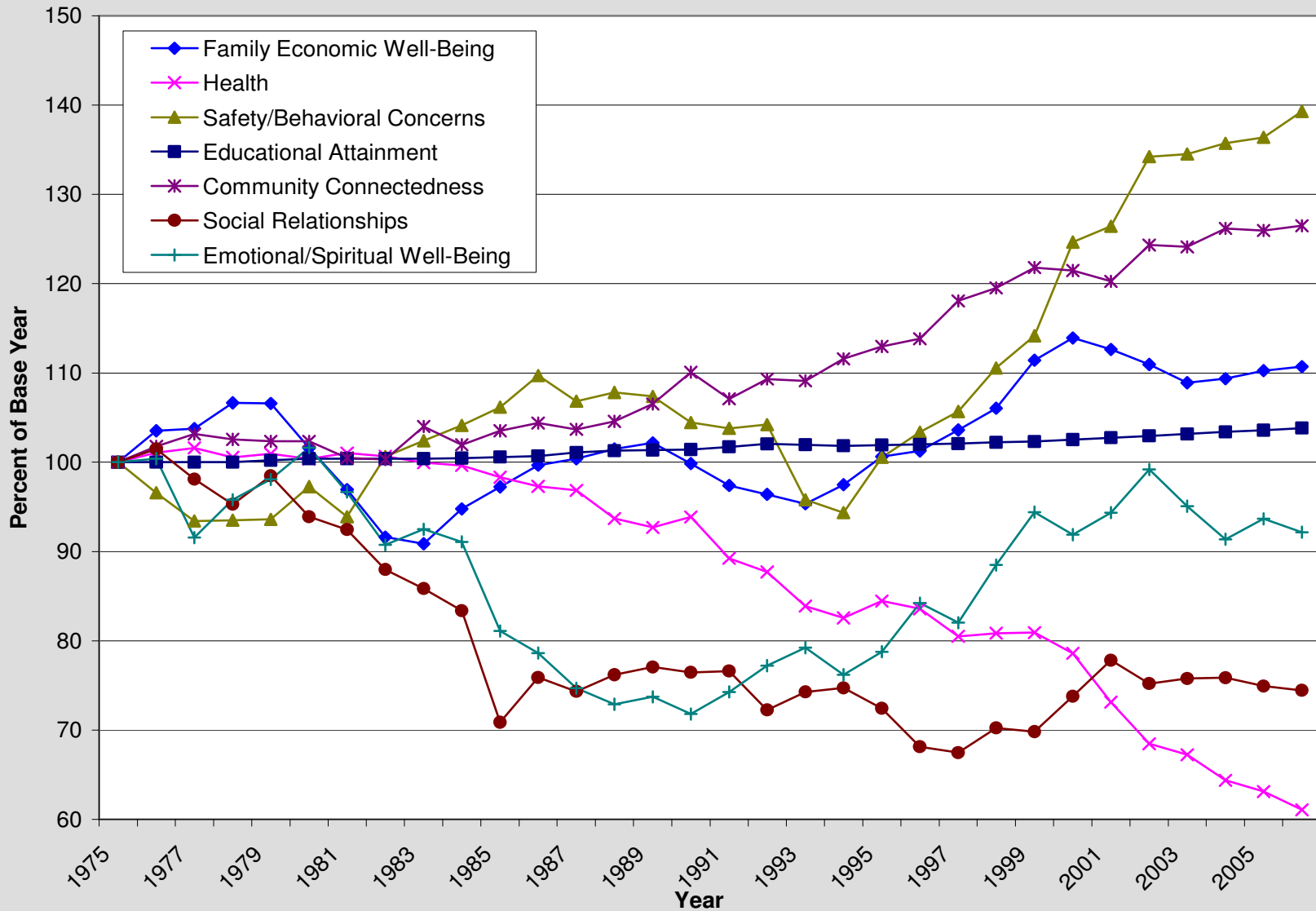
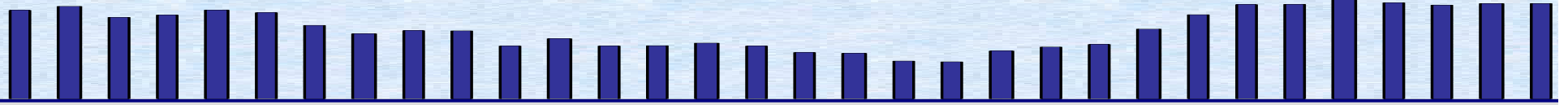


Figure 2. Domain-Specific Summary Indices, 1975-2005, with Projections for 2006.

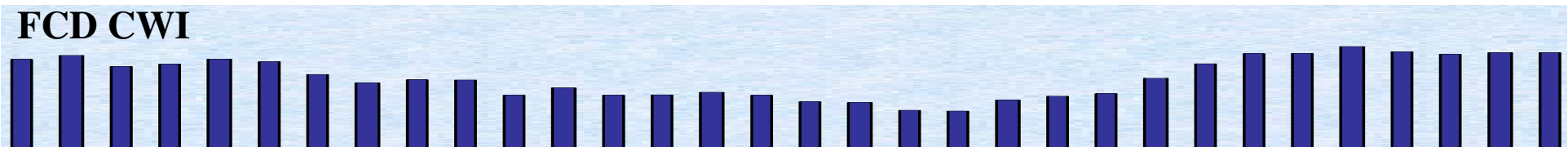


FCD CWI

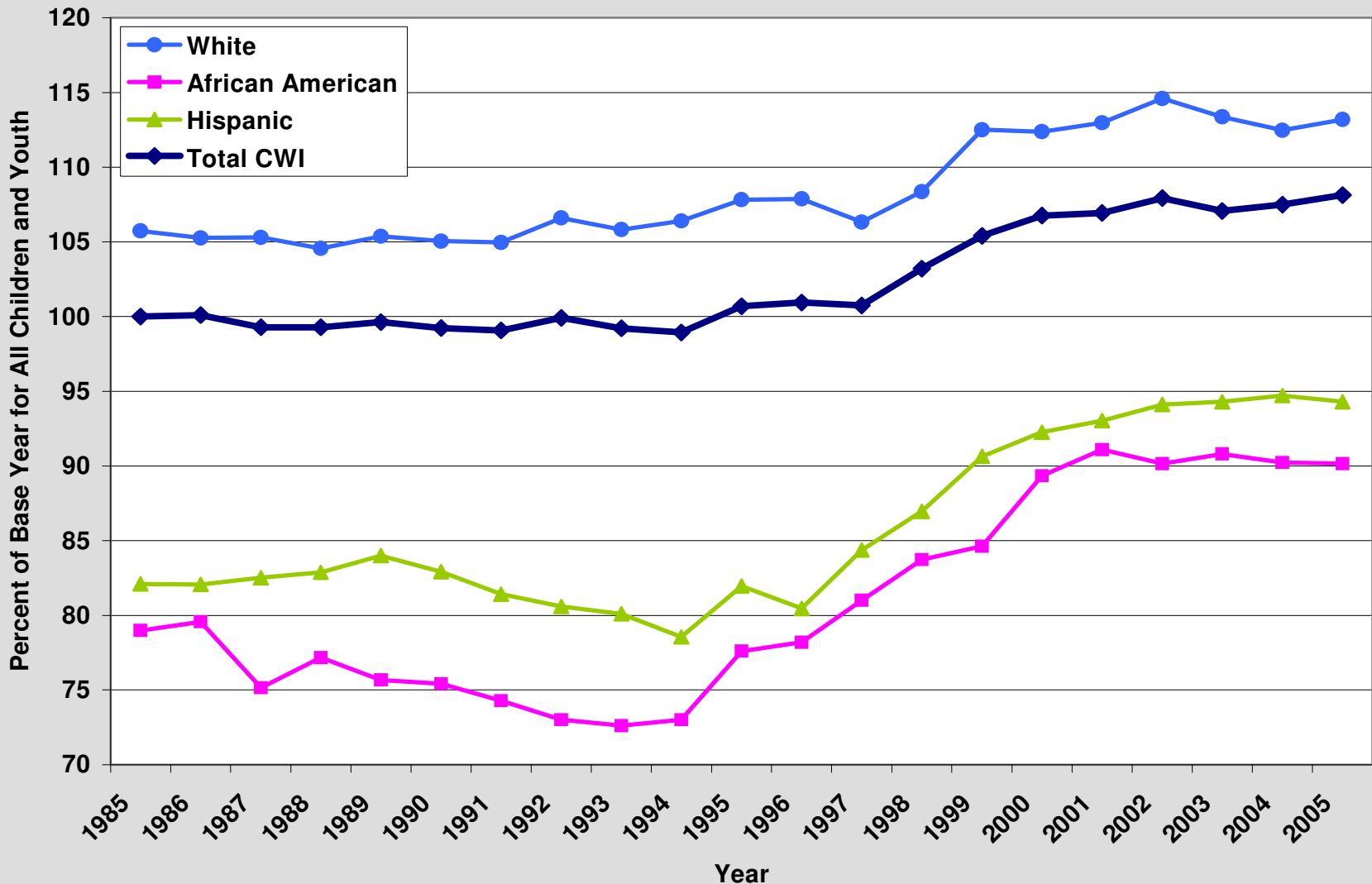


# Trends in Child and Youth Well-Being by Race and Ethnicity

# FCD CWI



**Figure 3. Total and Race/Ethnic-Group Summary CWIs as a Percent of Total CWI for all Children and Youth at Base Year, 1985-2005**



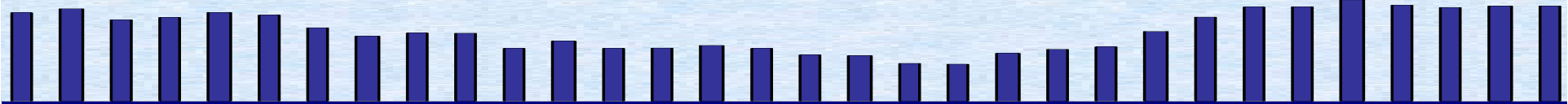
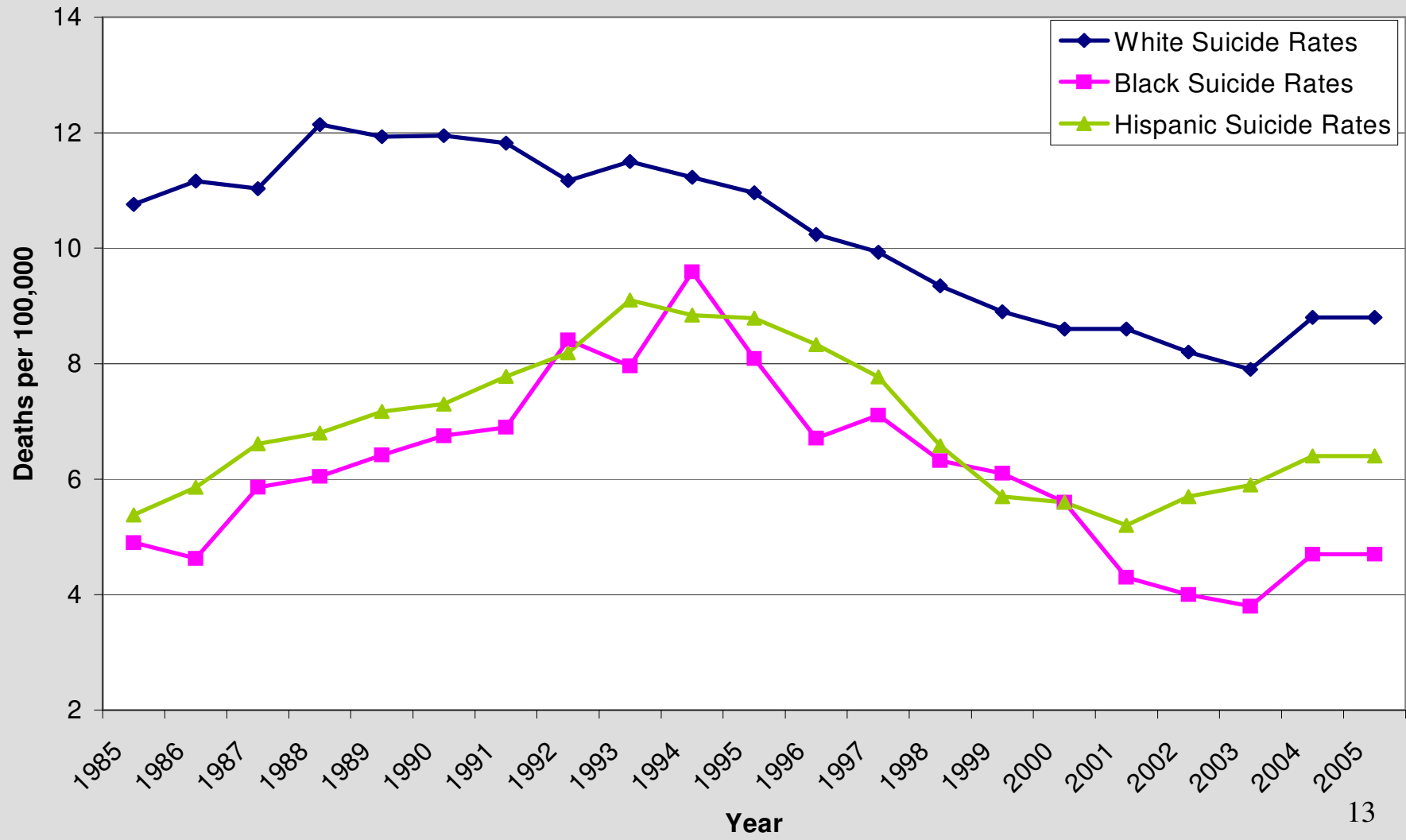
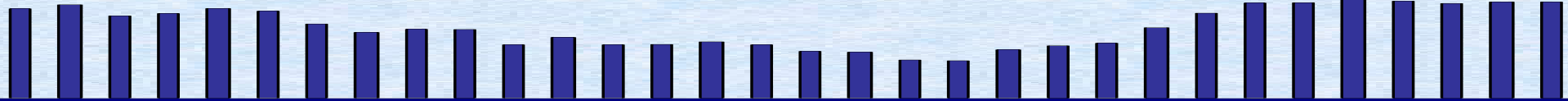


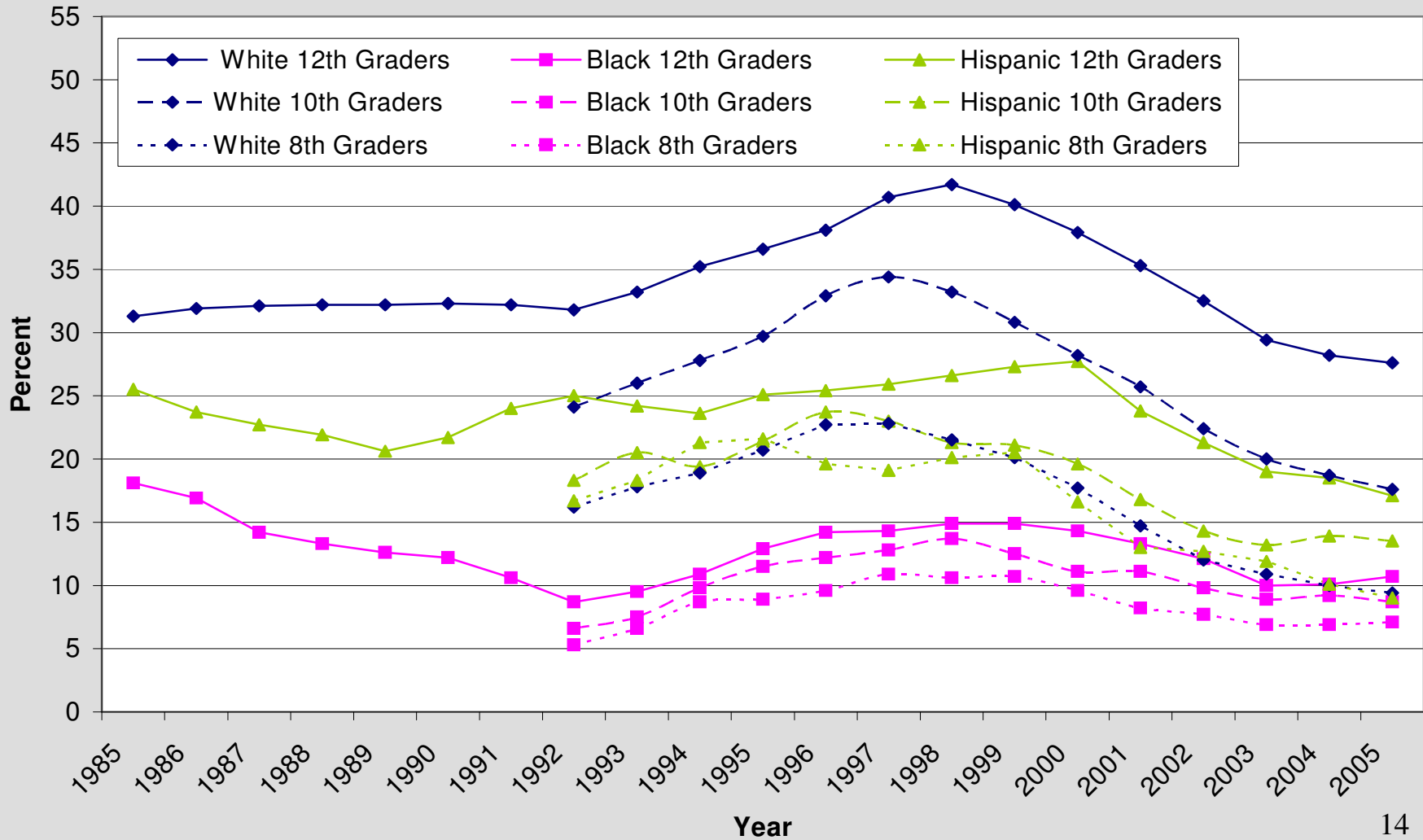
Figure 3a. Suicide Rates, Ages 15-19, 1985-2005.



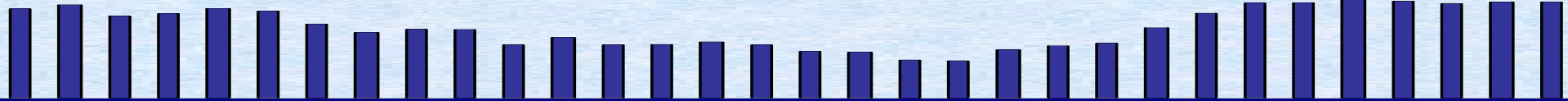
# FCD CWI



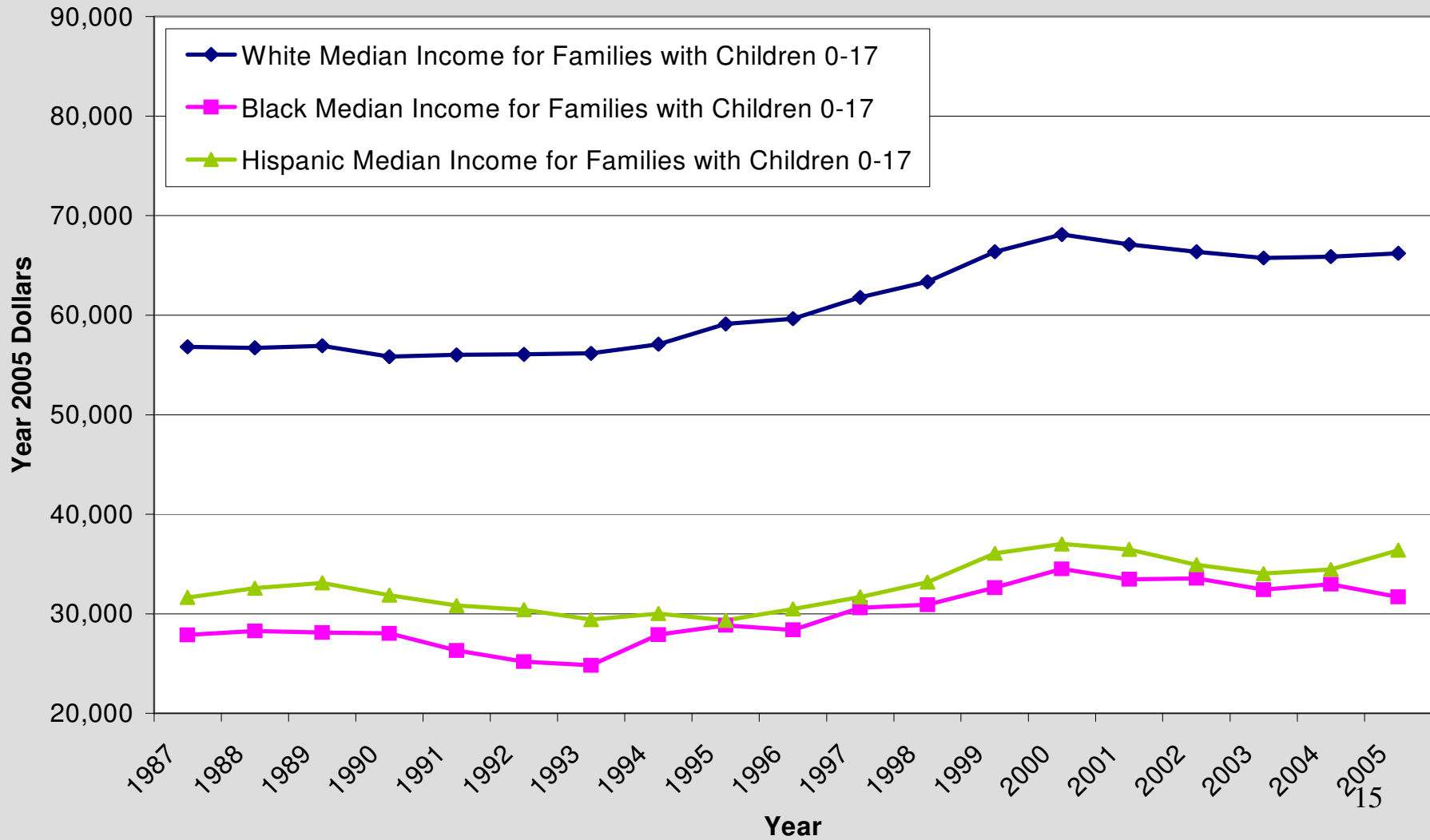
**Figure 3b. Rates of Cigarette Smoking Prevalence in the Past 30 Days, Grades 12, 10, and 8, 1985 (or 1992)-2005.**



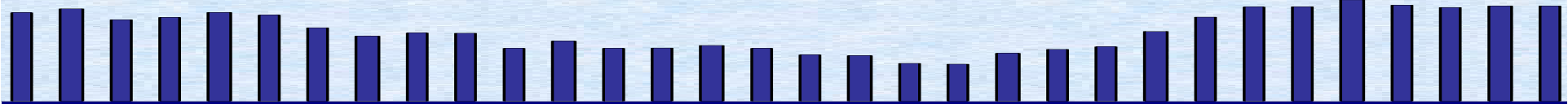
# FCD CWI



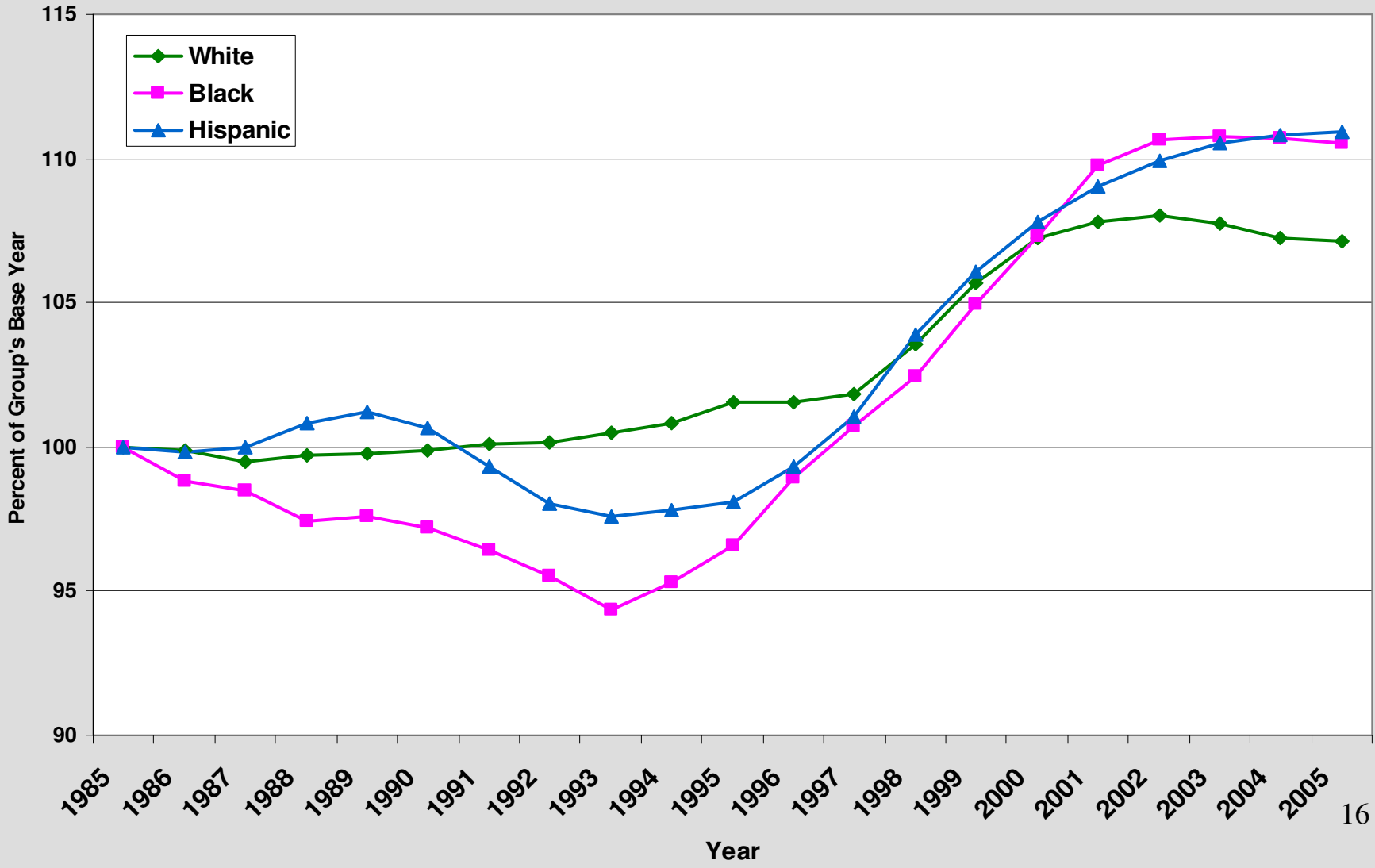
**Figure 3c. Median Family Incomes for Families with Children in 2005 Dollars, 1987-2005.**

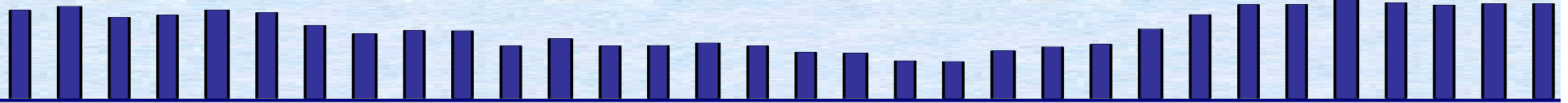


# FCD CWI



**Figure 4. Race/Ethnic Group-Specific Summary Indices of Child and Youth Well Being, 1985-2005**

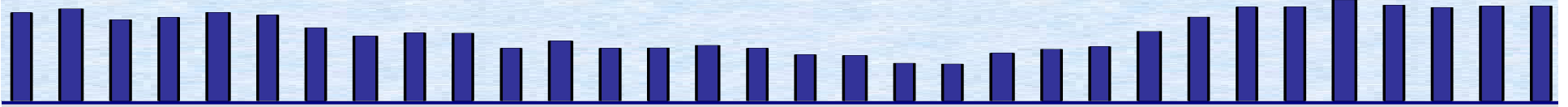




## Conclusions

- The CWI shows that children and youth in the United States are doing slightly better today than in 1975.
- But, progress in child and youth well-being has stalled.
- The gap in overall quality of life between white, African American, and Hispanic children narrowed between the mid-90s and 2002. That progress, too, has stalled. Disparities among the groups remain.
- We are doing better in areas of social life that reflect cultural values and over which parents and community institutions can exercise some influence and control.
- America's children are doing less well in areas that have to do with policy and the role of government.

FCD CWI



# The CWI on the Web:

<http://www.soc.duke.edu/~cwi/>